

# Bass Compressor Ribbon Replacement Guide

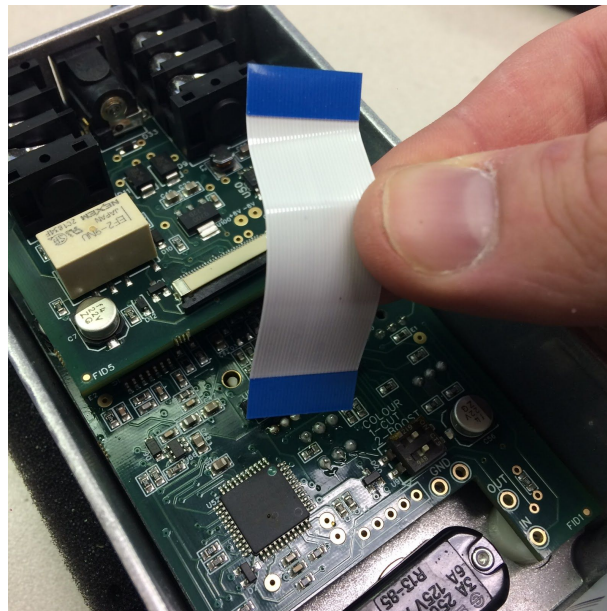
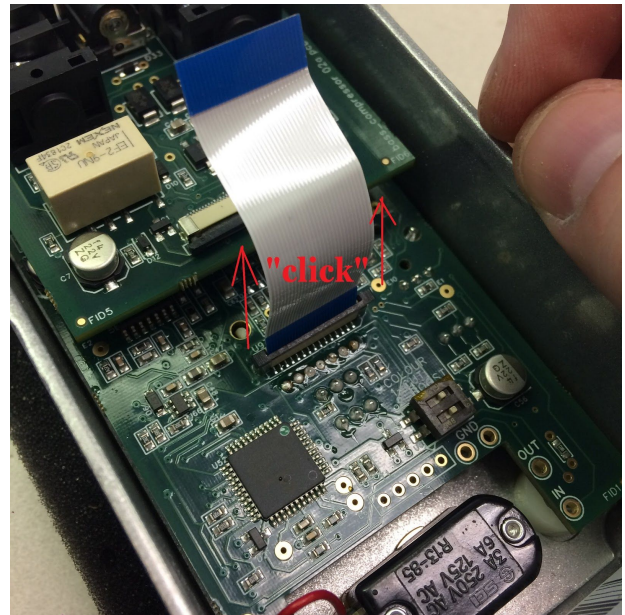
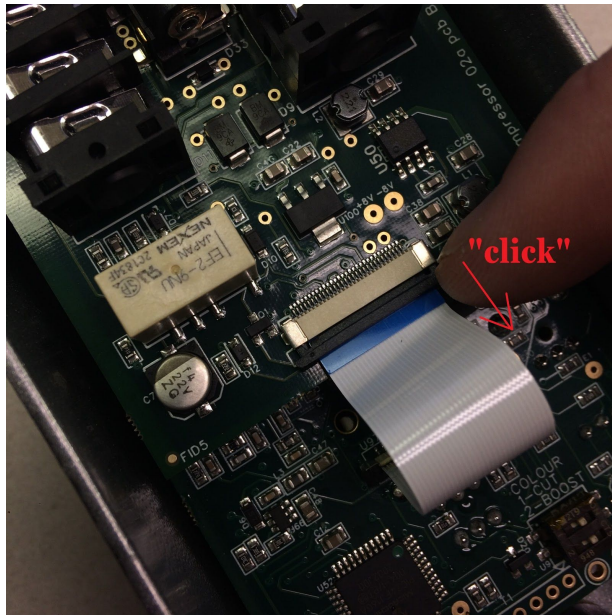
## Step 1:

Remove the screws from the bottom of the enclosure, and take off the back plate.



## Step 2:

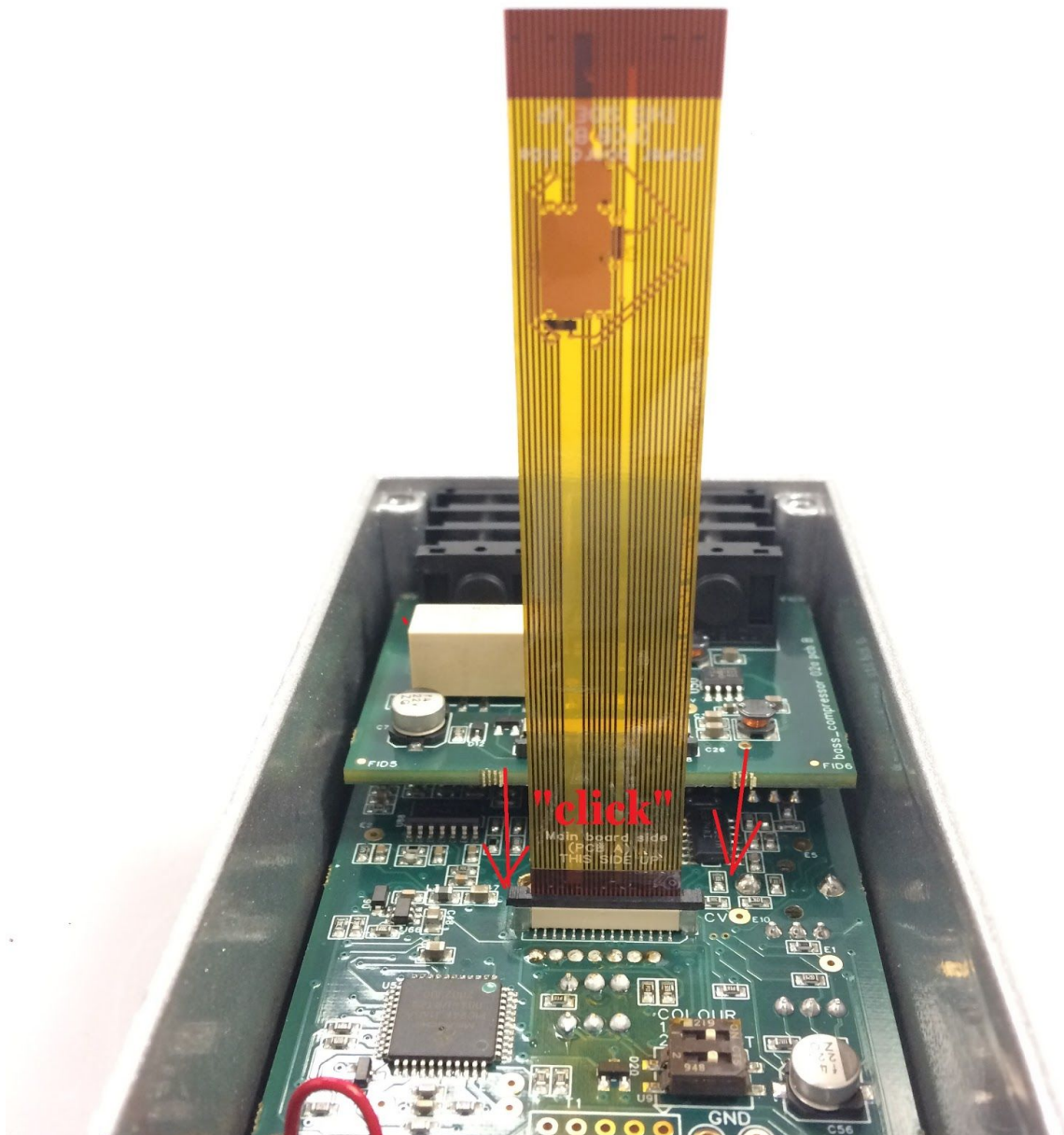
Right away, you'll see a ribbon cable connecting two circuit boards that are locked in place by two beige connectors. To unlock these connectors, gently pull up on the black upper part, and slide the ribbon cable out.





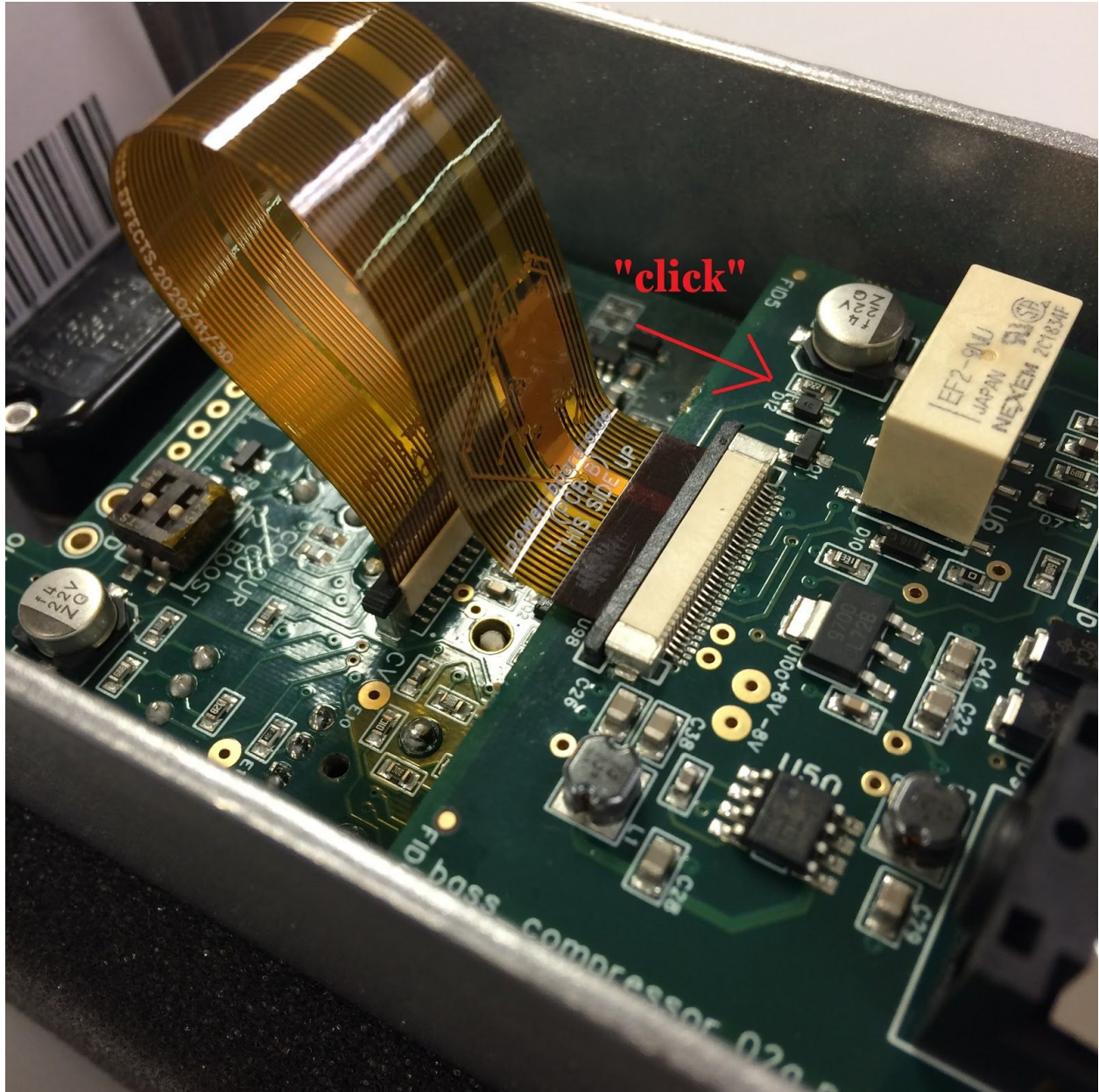
### Step 3:

Insert the new ribbon cable into the unlocked connector on the bottom circuit board as shown. The pins should be facing toward the jacks, and the circuitry should be facing upward and away from the user as shown. Make sure it's nice and flat to the bottom of the connector, and then lock it into place by gently pushing the black mechanism back downward.



#### Step 4:

Insert the other end of the ribbon cable into the unlocked connector on the upper circuit board as shown. This time, the pins should be facing downward. Again, ensure it's fully inserted and flat to the end of the connector, and then lock it into place.





### Step 5:

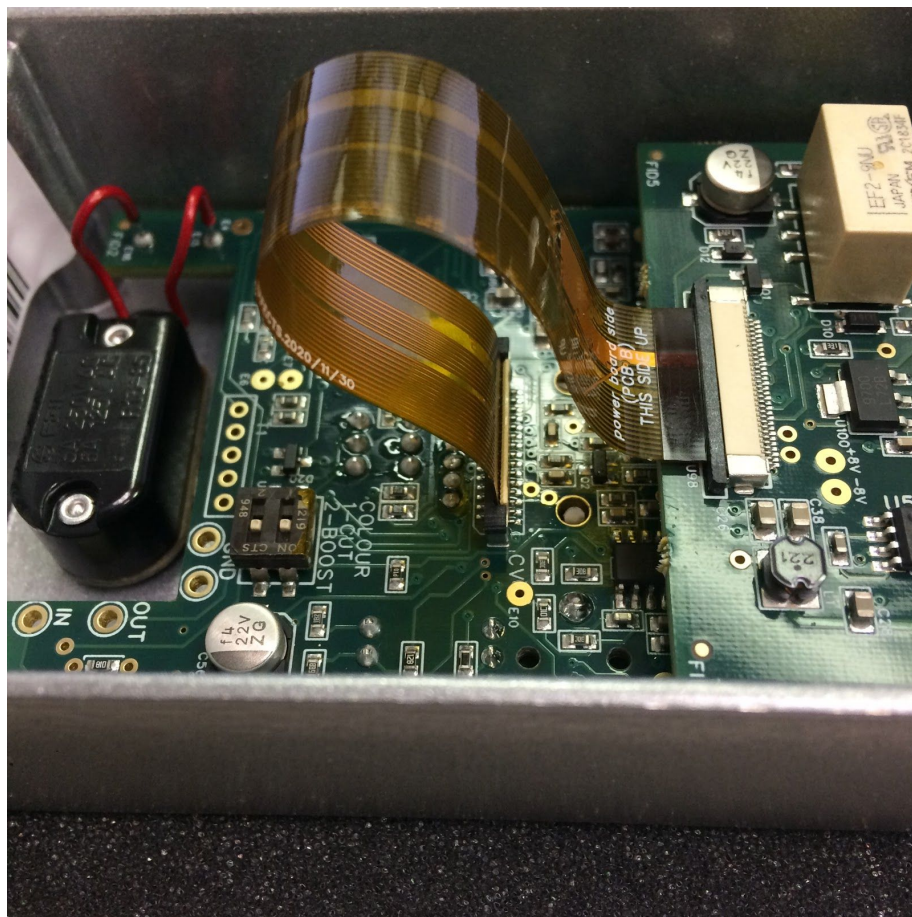
That's it! Replace the bottom plate and screws and get back to rockin'!



If you have any questions, or run into any problems, feel free to contact us at [support@empresseffects.com](mailto:support@empresseffects.com) or toll free at 888-676-1853\*.

Thanks!

Empress Effects



\* Please note that, during the Covid-19 related lockdown in the province of Ontario, our office is staffed on a rotating basis. Telephone service may not be immediately available, but please leave a message if prompted and we'll get back to you ASAP.